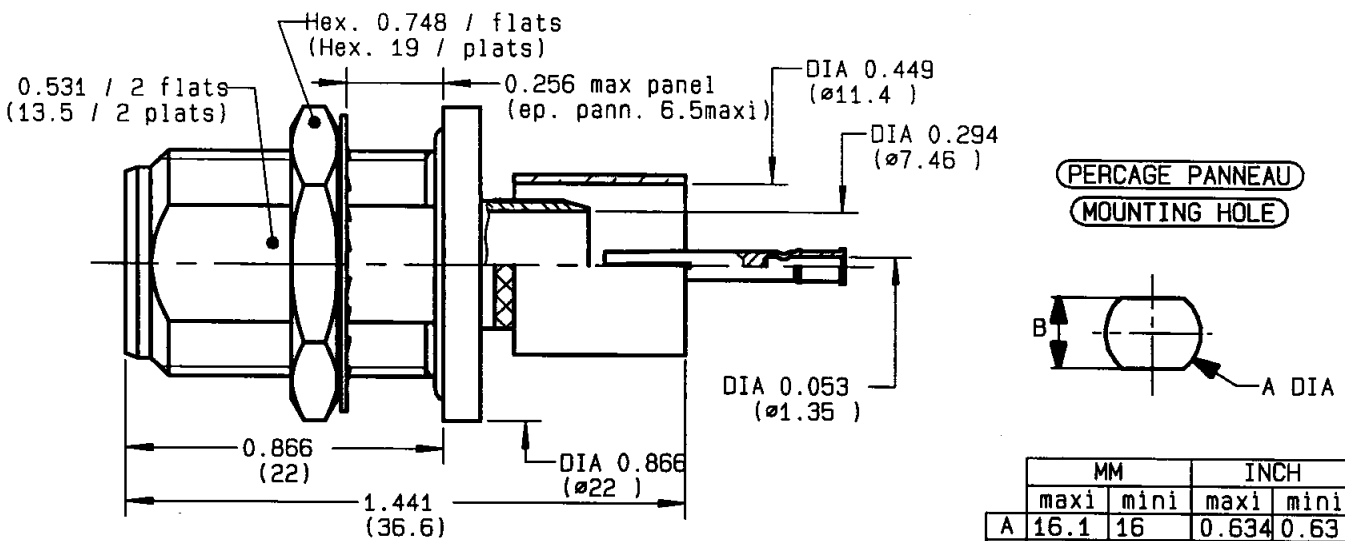


**STRAIGHT BULKHEAD JACK FULL CRIMP-TYPE  
PANEL SEAL CABLE 11/75 D**

**R162.339.000**

**SERIES**

**N 75**



NOMINAL IMPEDANCE	<b>75</b> $\Omega$
FREQUENCY RANGE	<b>0-1.5</b> GHz
TEMPERATURE RATING	<b>-55/+155</b> °C
V:S.W.R	<b>1.05 +</b> x F(GHz)Maxi
RF INSERTION LOSS	<b>0.15</b> $\sqrt{F}$ (GHz) dB Maxi
VOLTAGE RATING	<b>1400</b> Veff Maxi
DIELECTRIC WITHSTANDING VOLTAGE	<b>2500</b> Veff Mini
INSULATION RESISTANCE	<b>5000</b> M $\Omega$ Mini
HERMETIC SEAL	<b>NA</b> Atm.cm <sup>3</sup> /s
LEAKAGE (pressurized only)	<b>NA</b>
MECHANICAL DURABILITY	<b>500</b> Cycles
WEIGHT	<b>33.4</b> gr
SPECIFICATION	

CABLES : **RG 216**

OTHERS CHARACTERISTICS

CABLE RETENTION	<b>300</b> N Mini
CENTER CONTACT RETENTION	
Axial force - mating end	<b>27</b> N Mini
Axial force - opposite end	<b>27</b> N Mini
Torque	<b>NA</b> cm.N Mini
RECOMMENDED TORQUES	
Mating	<b>NA</b> cm.N
Panel nut	<b>500</b> cm.N
Clamp nut	<b>NA</b> cm.N

CONNECTOR PARTS	MATERIALS	FINISH	(all values are given in micrometers)
BODY	BRASS	BBR 2	
OUTER CONTACT	BRASS	BBR 2	
CENTER CONTACT	BERYLLIUM COPPER	GOLD 0.5 OVER NICKEL 2	
INSULATOR	PTFE	-	
GASKET	SILICONE RUBBER	-	
OTHERS PIECES	BRASS	BBR 2	

ISSUE	CREATION DATE	FILE PART-NUMBER
<b>9733D00</b>	<b>28-OCT-94</b>	



Connect to the future

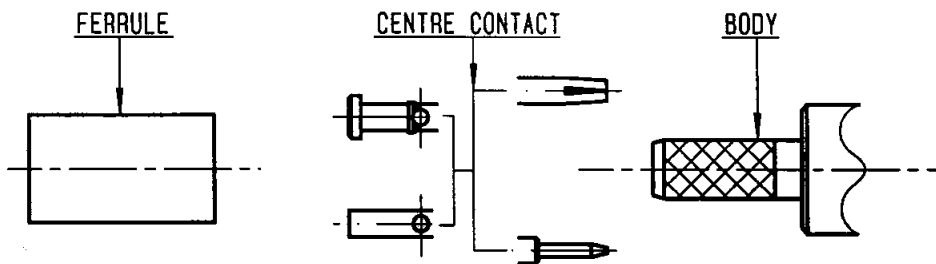
The information given here is subject to change without notice. Design changes may be in order to improve the product.

GAUTIER



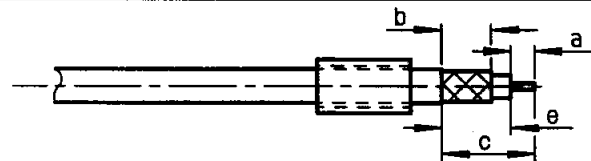
**R162.339.000**

ISSUE 9733D00 SERIES N 75



①

Slide onto the cable the ferrule  
Strip the cable .

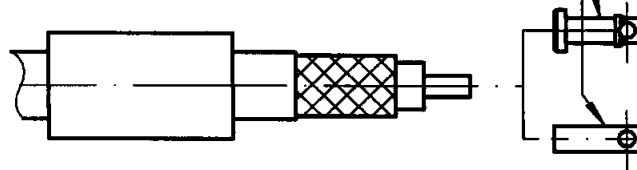


Stripping	a	b	c	d	e
inch	0.177	0.315	0.63	0	0.453
mm	4.5	8	16		11.5

②

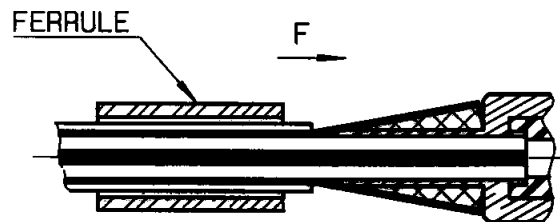
Slide on centre contact until it bottoms against cable dielectrique .  
Crimp centre contact .  
Crimping tool : R282 223 000 ( Hex. : 0.068 )  
or R282 293 000 ( M22520/5-01 )  
+ dies R282 235 011 ( M22520/5-11 ) .

CRIMPING



③

Fan the braid .  
Slide cable into the body until bottoms against insulator .  
Slide ferrule over the braid .  
(In direction F)



④

Crimp the ferrule with crimping tool  
R 282 231 000 ( Hex. : 0.415 ) or  
crimping tool R282 293 000 ( M22520/5-01 )  
+ dies R282 235 116 ( Y 116 DANIELS )  
Cut the excess of braid .

